

# The Halton | 2924 Square Feet



2 STOREY COLLECTION

## THE HALTON 2924 Square Feet

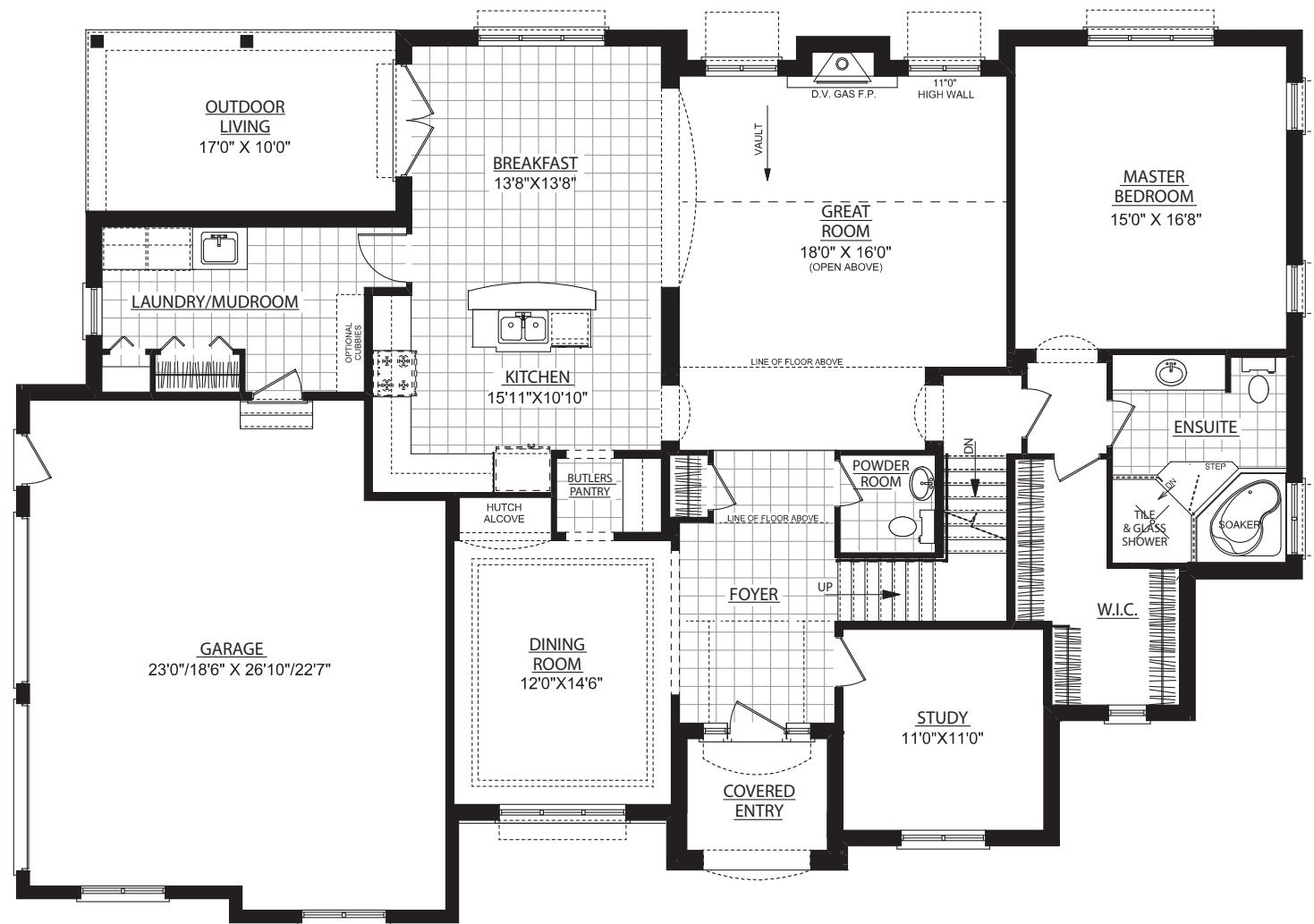
» The Halton is a traditional and tasteful two-storey home. It is a timeless design with plenty of architectural interest on its façade. Tumbled stone, cedar shake dormer, French Country shutters and mullioned windows provide lovely rhythm and visual interest to this home. The three-car garage is discreetly tucked into the side elevation and, with its stone and brick peaked roof and shuttered windows it blends perfectly into the homes main elevation.





# The Halton | 2924 Square Feet

MAIN FLOOR PLAN



SECOND FLOOR PLAN

